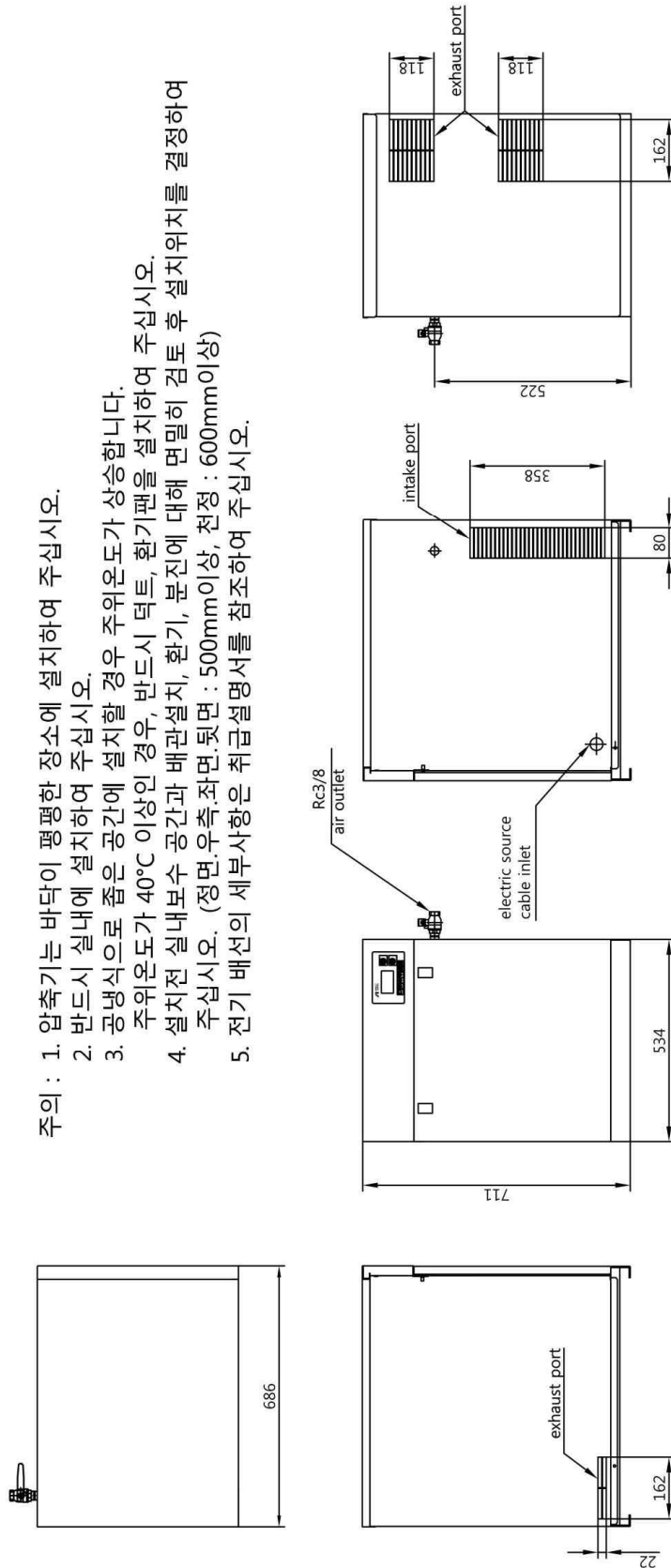


Oil-Free Scroll Air Compressor	DATE	기술13-0311-
	CUSTOMER	
	MODEL No.	SLPS-37B-S1
1. BASIC COMP.		
Air end	SL-165E x 1 unit	
Compressed fluid	Atmosphere (air)	
Compressed method	Oil free scroll	
Cooling method	Air cooled	
Operation control	Multi stage control Automatic start-stop [Pressure sensor detect]	
Installation requirements	In door	
Suction requirements	Atmospheric pressure , 0~40℃	
Control pressure	0.65 ~ 0.8 MPa	
Discharge air volume ※1	420 L/min	
Air end rotation speed	3,150 min-1	
Driving method	V-Belt Drive	
Discharge air outlet	Rc 3/8	
Air Receiver ※2	None	
Discharge outlet temperature	Suction air temperature less than +30℃	
Noise level (front face 1.5m) ※3	49 dB(A)	
Ground vibration ※4 dB	Lower than 45	
Panel vibration (half amplitude) μm	Lower than 100	
2. MOTOR		
Type of motor	F Class insulation 4 pole	
Output power	3.7 kW	
Electric source	Three phase AC 220, 380, 440V / 60Hz	
Rated current (60Hz)	220V : 8.4A 380V : 4.9A 440V : 4.2A	
Starter method	Magnetic contactor direct start	
3. PROTECTION		
Over current stop	Thermal Relay (OCR)	
Air end over heat stop	Advance alarm	
4. OTHERS		
Dimension (L x W x H) ※5	534 x 686 x 711 mm	
Aprox weight	116 kg	
External control signal input contact	Operation circuit 220V	
Malfunction·Alarm signal Output contact	Non current "a" contact point	
Accessories	Instruction manual , Base cover x 2	

REMARK

- ※1. The discharge air volume is the average value which is converted into the discharge air volume of atmospheric pressure at 0.8Mpa (all air end in operation)
- ※2. Subject to the application, recomendable air receiver should be required.
- ※3. Noise level is measured at a anechoic room under loading operation.
- ※4. The grounding vibration is measured at the place where it is from 10cm front face.
(The vibraion value vary subject to ground situation.) The data is for refrence when it is commissioned on concreat.
- ※5. The dimension is outter dimension which does not include ball valve.



- 주의 : 1. 압축기는 바닥이 평평한 장소에 설치하여 주십시오.
2. 반드시 실내에 설치하여 주십시오.
3. 공냉식으로 줄은 공간에 설치할 경우 주위온도가 상승합니다.
주위온도가 40°C 이상인 경우, 반드시 덕트, 환기팬을 설치하여 주십시오.
4. 설치전 실내보수 공간과 배관설치, 환기, 분진에 대해 면밀히 검토 후 설치위치를 결정하여 주십시오. (정면.우측.좌면.뒷면 : 500mm이상, 천정 : 600mm이상)
5. 전기 배선의 세부사항은 취급설명서를 참조하여 주십시오.

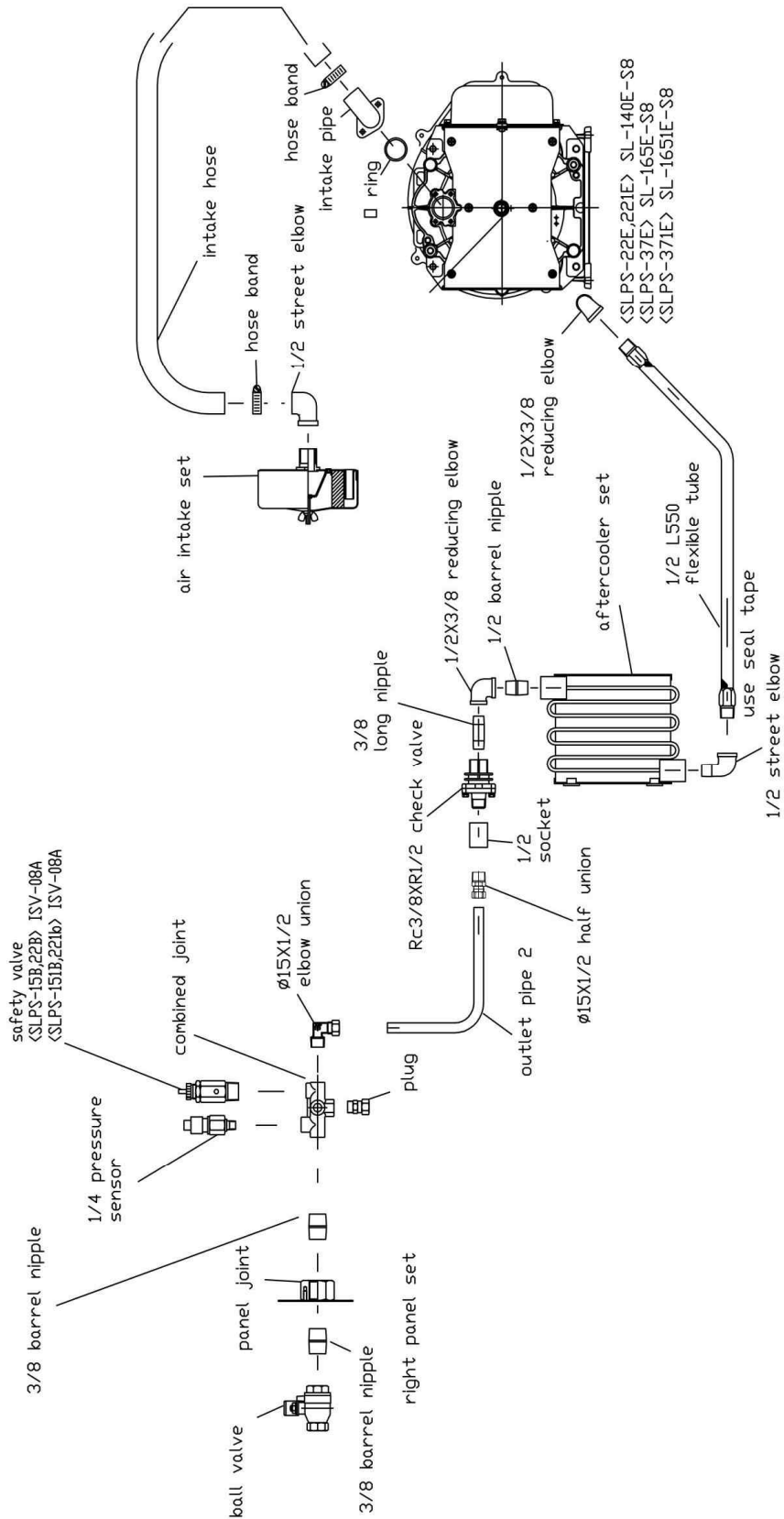
Product Name

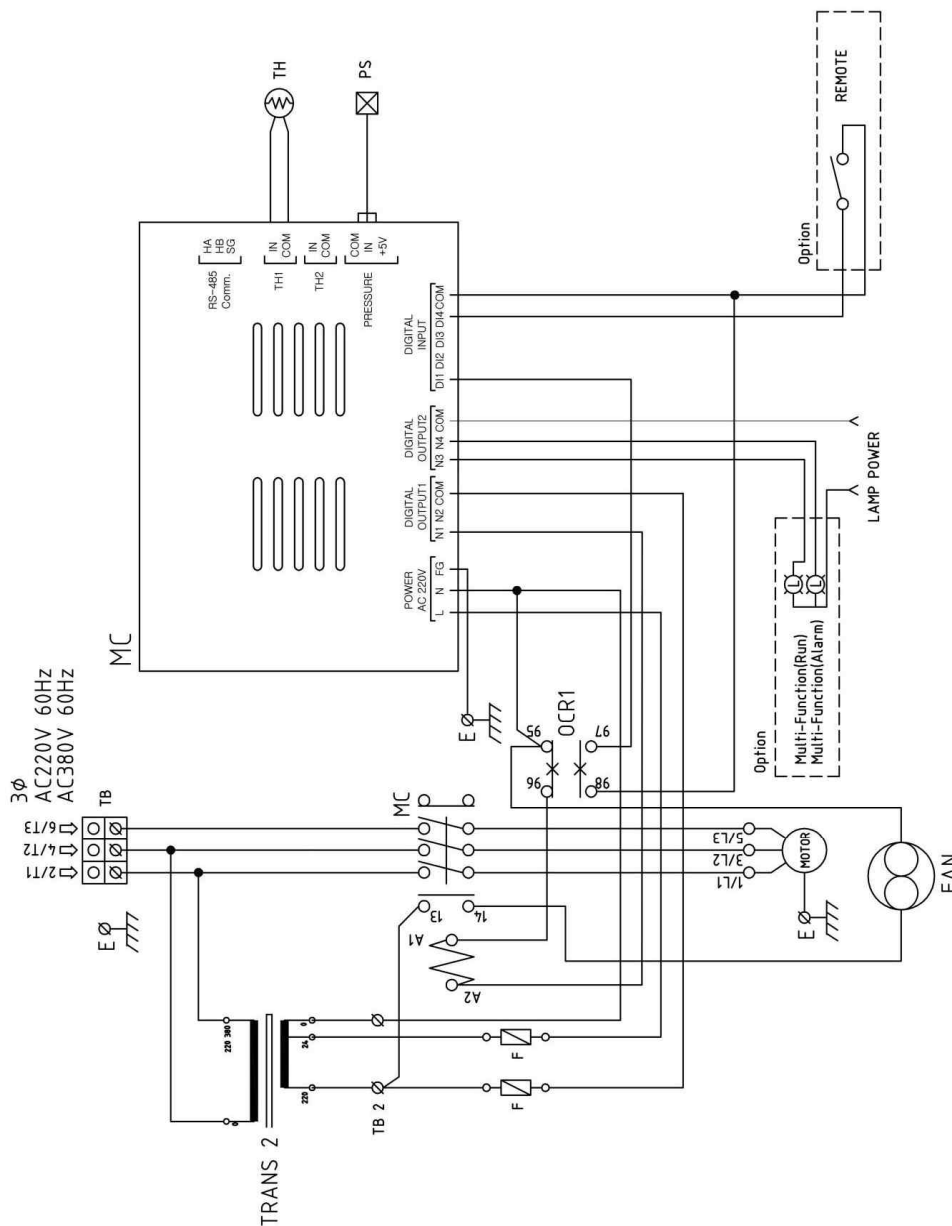
Oil-Free Scroll Air Compressor

Model

SLPS-37B-S1

REV. 0





TB2	terminal block
TRANS2	transformer
TB	terminal block
FAN	ventilation fan
PS	pressure sensor
TH	temperature sensor
OCR	thermal relay
MC	magnet contactor
MOTOR	motor
MC	main controller